

PRODUCT CODE: MP526
CHANNEL CANTILEVER ARM

DESCRIPTION

900mm Channel Cantilever Arm - 2 hole base plate

FINISH

Hot Dipped Galvanised

MATERIAL

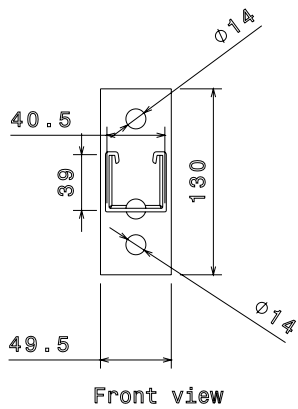
Steel

PACKAGING

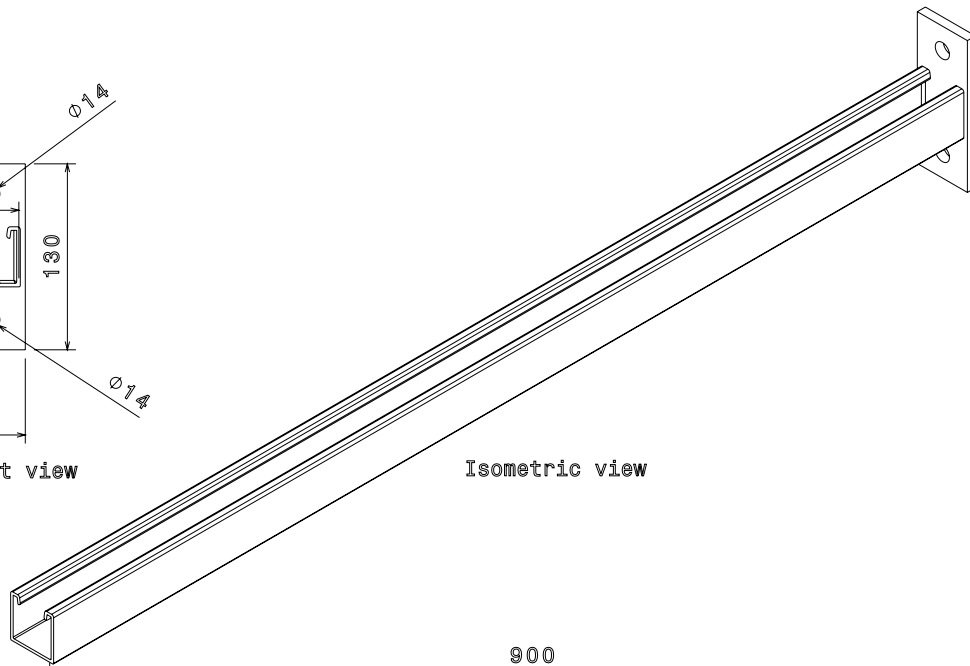
Supplied individually

ADDITIONAL NOTES

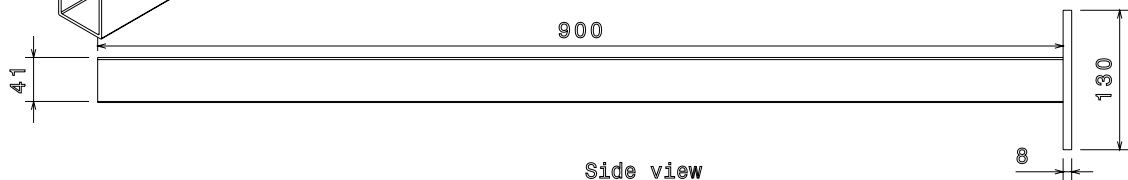
Compliant to LU Standard 1-085 (for use on surface & sub-surface locations)



Front view



Isometric view



Side view